

RE 25715

Edition: 2022-05

Replaces: 2020-10

rexroth
A Bosch Company

Pressure relief valve, direct operated

DBD .. K



H8070

- ▶ Size 2
- ▶ Component series 2X
- ▶ Maximum operating pressure 420 bar
- ▶ Maximum flow 2 l/min

Features

- ▶ Screw-in cartridge valve
- ▶ 6 pressure ratings
- ▶ 4 adjustment types, optionally:
 - Hexagon (partially with protective cap)
 - Rotary knob with scale
 - Lockable rotary knob with scale
 - Hand wheel
- ▶ Corrosion-protected design

Contents

Features	1
Ordering code	2
Function, section, symbol	3
Technical data	4
Characteristic curves	5
General information	5
Dimensions	6
Mounting cavity	7
Accessories	8
Further information	8

RE 25715, edition: 2022-05, **Bosch Rexroth AG**

Knowledge is POWER – Motion Force Control is our Business

HYQUIP Limited New Brunswick Street Horwich Bolton Lancashire BL6 7JB UK

2/8 DBD..K | Pressure relief valve

Ordering code

01	02	03	04	05	06	07	08	09	10
DBD		2	K	2X	/				*

01	Pressure relief valve, direct operated	DBD
----	--	-----

Adjustment type

02	Hexagon with protective cap	S ¹⁾
	Rotary knob with scale	L
	Lockable rotary knob with scale	A
	Hand wheel	H

03	Size 2	2
----	--------	---

04	Screw-in cartridge valve	K
----	--------------------------	---

05	Component series 20 ... 29 (20 ... 29: unchanged installation and connection dimensions)	2X
----	--	----

Pressure rating

06	Set pressure up to 25 bar	25
	Set pressure up to 50 bar	50
	Set pressure up to 100 bar	100
	Set pressure up to 200 bar	200
	Set pressure up to 315 bar	315
	Set pressure up to 420 bar	420

Set pressure

07	Without setting	no code
	Set, adjustable	- ... ²⁾
	Set; sealed, not adjustable (only with adjustment type "S")	P ... ^{2); 3)}

Corrosion resistance

08	None	no code
	High corrosion protection (720 h salt spray test according to EN ISO 9227) (only with adjustment type "S")	J5 ¹⁾

Seal material (observe compatibility of seals with hydraulic fluid used, see page 4)

09	NBR seals	no code
	FKM seals	V
	Low-temperature version (only with adjustment type "S")	MT

10	Further details in the plain text	*
----	-----------------------------------	---

¹⁾ Protective cap for version "J5" not included in the scope of delivery.

Protective cap available as individual part (material no. **R900135501**)

²⁾ Specify set pressure (smallest setting interval 10 bar)

Order example:

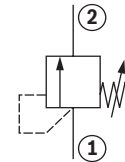
Set pressure 280 bar, adjustable → DBDS 2 K2X/315-**180**

Set pressure 140 bar, sealed → DBDS 2 K2X/200**P140**

³⁾ Not with version "J5"

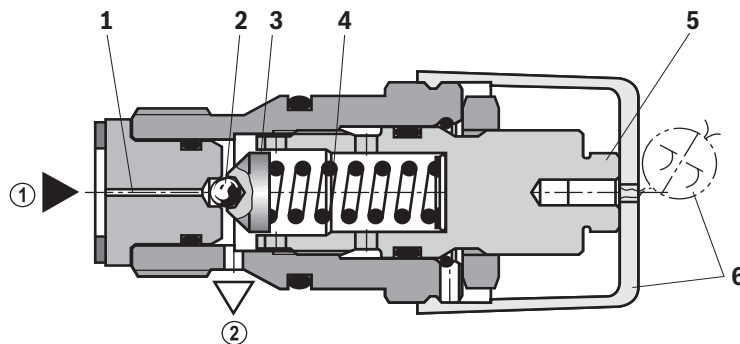
Function, section, symbol

Pressure valve type DBD.. K refers to direct operated pressure relief valves to be installed in block designs. They are used to limit a system pressure. The system pressure can be set steplessly via the adjustment type (5). In the initial position the valve is closed. Via control line (1) and ball (2), the pressure in the main port ① acts on the spring plate (3). If the pressure in the main port ① rises above the value set at the compression spring (4), the ball (2) opens and the hydraulic fluid flows into the main port ②.



Version "P":

Pressure adjustment with lead seal and protective cap (6) for adjustment type "S".



- ① = Main port 1 (P)
- ② = Main port 2 (T)

Type DBDS 2 K2X/...(P)...

4/8 **DBD..K** | Pressure relief valve

Technical data

(For applications outside these values, please consult us!)

General		
Weight	kg	approx. 0.3
Installation position		any
Ambient temperature range	°C	-30 ... +80 (NBR seals) -20 ... +80 (FKM seals) -45 ... +70 (low-temperature version)
MTTF _D values according to EN ISO 13849	years	150 ... 1200 (for more information see data sheet 08012)

Hydraulic		
Maximum operating pressure	► Input	bar 420
	► Output	bar 315
Maximum set pressure	bar	25; 50; 100; 200; 315; 420
Maximum flow	l/min	2 (recommended 1.5)
Hydraulic fluid		see table below
Hydraulic fluid temperature range	°C	see "ambient temperature range"
Viscosity range	mm ² /s	10 ... 800
Maximum admissible degree of contamination of the hydraulic fluid		Class 20/18/15 ¹⁾
Cleanliness class according to ISO 4406 (c)		

Hydraulic fluid	Classification	Suitable sealing materials	Standards	Data sheet
Mineral oils	HL, HLP, HLPD, HVLP, HVLDP	NBR, FKM	DIN 51524	90220
Bio-degradable	► Insoluble in water	HETG	ISO 15380	90221
		HEES		
	► Soluble in water	HEPG	ISO 15380	
Flame-resistant	► Water-free	HFDU (glycol base)	ISO 12922	90222
		HFDU (ester base)		
		HFDR		
	► Containing water	HFC (Fuchs: Hydrotherm 46M, Renosafe 500; Petrofer: Ultra Safe 620; Houghton: Safe 620; Union: Carbide HP5046)	ISO 12922	90223



Important information on hydraulic fluids:

- For further information and data on the use of other hydraulic fluids, please refer to the data sheets above or contact us.
- There may be limitations regarding the technical valve data (temperature, pressure range, life cycle, maintenance intervals, etc.).
- The ignition temperature of the hydraulic fluid used must be 50 K higher than the maximum surface temperature.
- **Bio-degradable and flame-resistant – containing water:** If components with galvanic zinc coating (e.g. version "J3" or "J5") or parts containing zinc are used, small amounts of dissolved zinc may get into the hydraulic system and cause accelerated aging of the hydraulic fluid. Zinc soap may form as a chemical reaction product, which may clog filters, nozzles and solenoid valves – particularly in connection with local heat input.

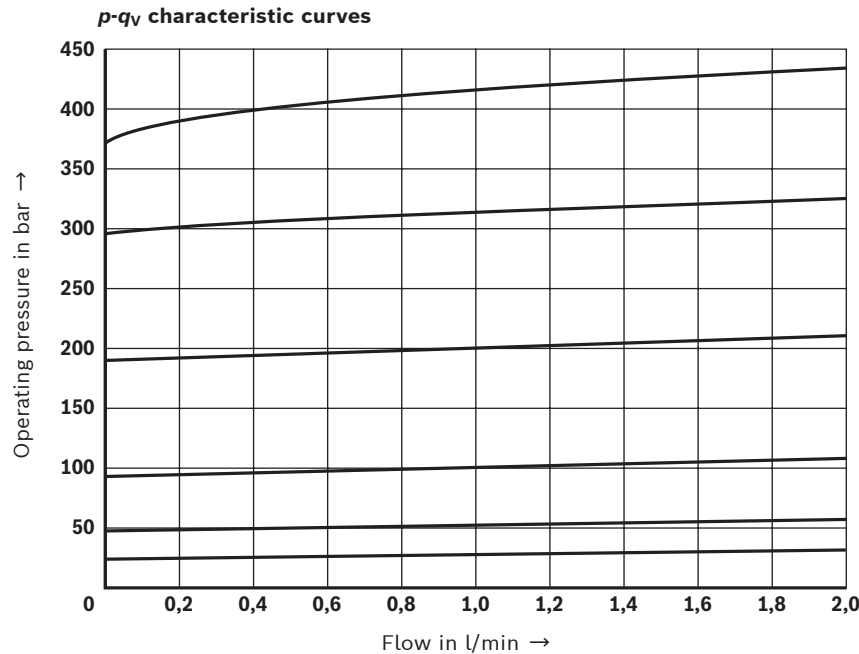
► Flame-resistant – containing water:

Due to the increased cavitation tendency with HFC hydraulic fluids, the life cycle of the component may be reduced by up to 30% as compared to the use with mineral oil HLP. In order to reduce the cavitation effect, it is recommended - if possible specific to the installation - to back up the return flow pressure in ports T to approx. 20% of the pressure differential at the component.

¹⁾ The cleanliness classes specified for the components must be adhered to in hydraulic systems. Effective filtration prevents faults and simultaneously increases the life cycle of the components.
For the selection of filters, see www.boschrexroth.com/filter.

Characteristic curves

(measured with HLP46, $\vartheta_{oil} = 40 \pm 5 \text{ }^{\circ}\text{C}$)



Notes:

- ▶ The characteristic curves apply for output pressure $p_T = 0 \text{ bar}$ in the entire flow range and were measured without housing resistance.
- ▶ Hydraulic counter pressures in the main port 2 (T) add 1:1 to the response pressure of the valve set in the adjustment type.

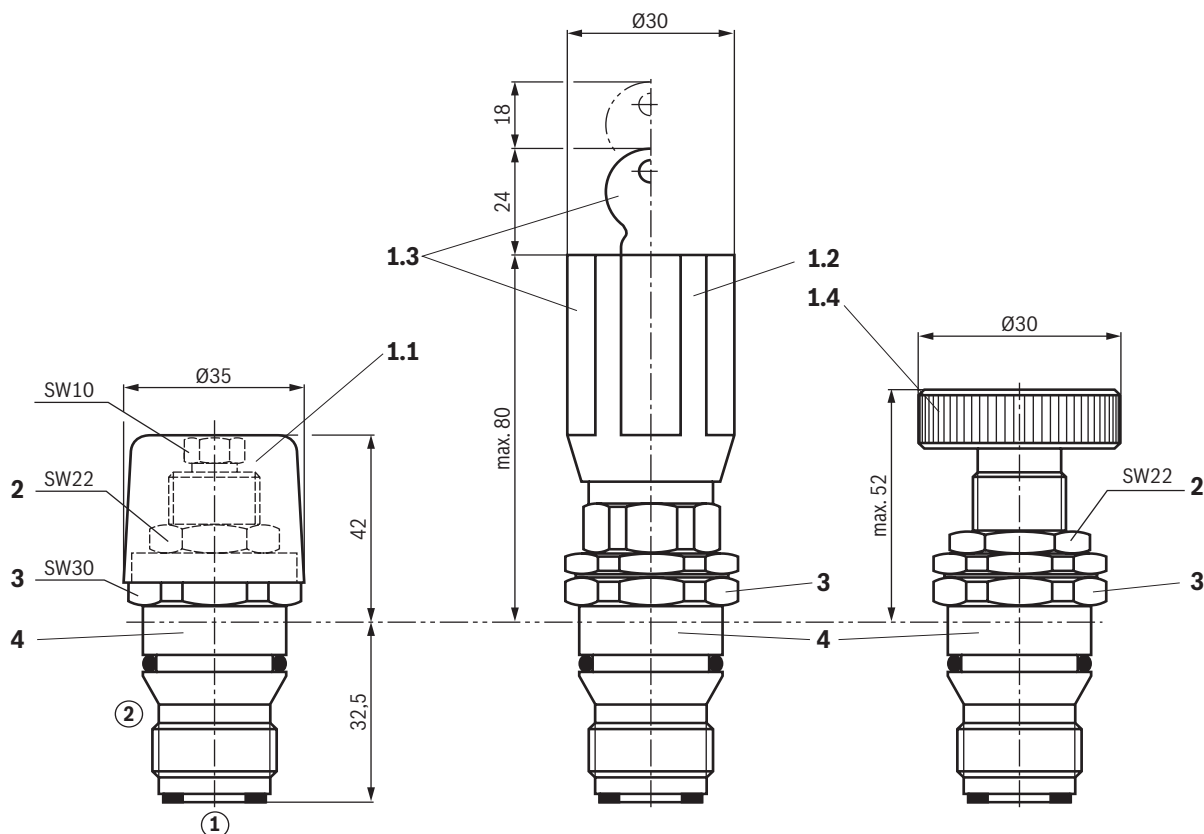
Example:

- Pressure adjustment of the valve due to spring preload (item 4 on page 3) $p_{spring} = 200 \text{ bar}$
- Hydraulic counter pressure in the main port 2 (T):
 $p_{hydraulic} = 50 \text{ bar}$
- \Rightarrow Response pressure = $p_{spring} + p_{hydraulic} = 250 \text{ bar}$
- ▶ The characteristic curves shown are determined with the associated p_{max} version ("pressure rating").
- ▶ The characteristic curves apply for operation as individual assembly "DBDx 2". If used as pilot control valve, the cracking pressure of the overall assembly (e.g. 2/2 directional cartridge valve) is not necessarily identical to the one of a set pilot control cartridge.
- ▶ Pressure adjustments are made with a test stand quantity of $Q = 1 \text{ l/min}$

6/8 DBD..K | Pressure relief valve

Dimensions

(dimensions in mm)



- 1.1 Adjustment type "S", hexagon with protective cap
- 1.2 Adjustment type "L", rotary knob with scale
- 1.3 Adjustment type "A", lockable rotary knob with scale
- 1.4 Adjustment type "H", hand wheel
- 2 Lock nut
- 3 Hexagon SW30, tightening torque when screwing in
 $M_A = 60^{+5} \text{ Nm}$
- 4 Embossed type designation

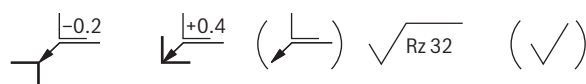
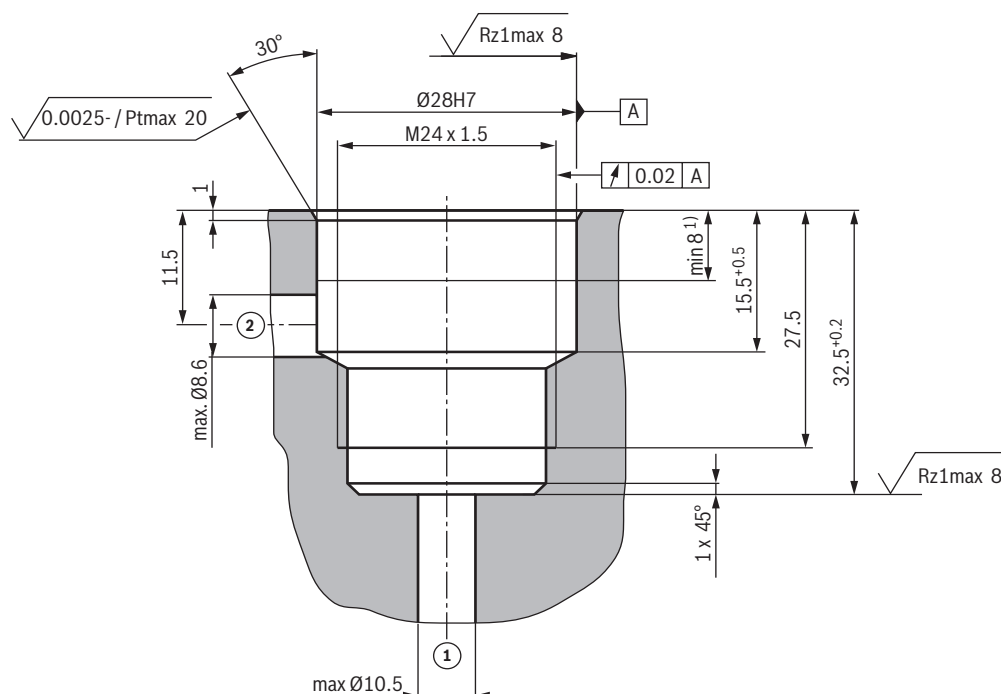
- ① = Main port 1 (P)
- ② = Main port 2 (T)

Bosch Rexroth AG, RE 25715, edition: 2022-05

Knowledge is POWER – Motion Force Control is our Business

HYQUIP Limited New Brunswick Street Horwich Bolton Lancashire BL6 7JB UK

Mounting cavity: DBD. 2K; 2 main ports; thread M24 x 1.5
(dimensions in mm)



① = Main port 1 (P)

② = Main port 2 (T)

¹⁾ Depth of fit

8/8 **DBD..K** | Pressure relief valve

Accessories

Cap element for use in the mounting cavity "DBD..2K"

	Sealing material	Material no.
Free passage "P to T"	NBR	R900737632
Connection "P to T" blocked	NBR	R900765751



Notice:

- ▶ FKM upon request

Further information

- ▶ Hydraulic fluids on mineral oil basis
- ▶ Environmentally compatible hydraulic fluids
- ▶ Flame-resistant, water-free hydraulic fluids
- ▶ Flame-resistant hydraulic fluids - containing water (HFAG, HFAS, HFB, HFC)
- ▶ Hydraulic valves for industrial applications
- ▶ General product information on hydraulic products
- ▶ Use of non-electrical hydraulic components in explosive atmospheres (ATEX)
- ▶ Assembly, commissioning and maintenance of industrial valves
- ▶ Selection of filters
- ▶ Information on available spare parts

Data sheet 90220
 Data sheet 90221
 Data sheet 90222
 Data sheet 90223
 Operating instructions 07600-B
 Data sheet 07008
 Data sheet 07011
 Data sheet 07300

Bosch Rexroth AG, RE 25715, edition: 2022-05

Knowledge is POWER – Motion Force Control is our Business

HYQUIP Limited New Brunswick Street Horwich Bolton Lancashire BL6 7JB UK